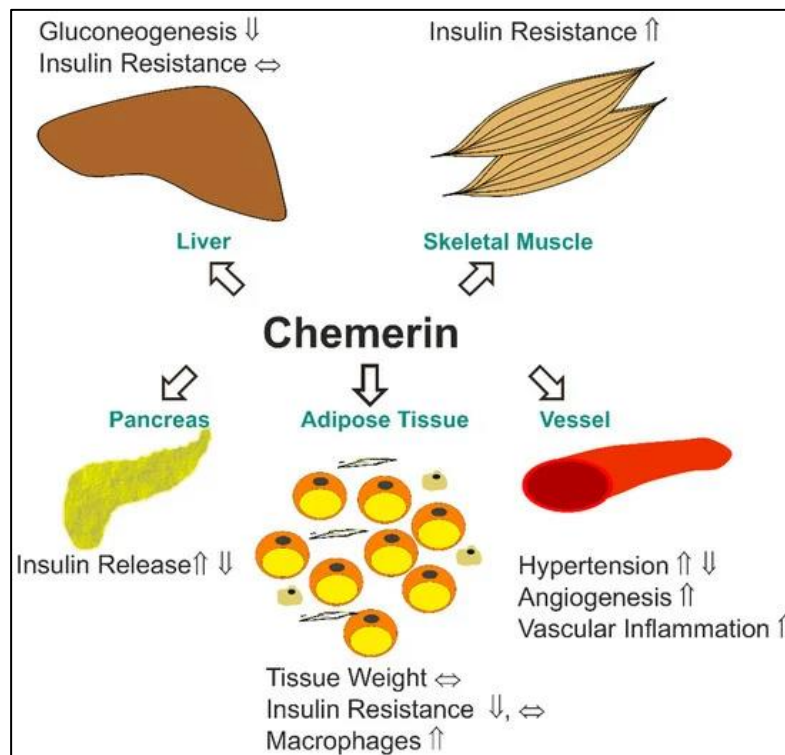
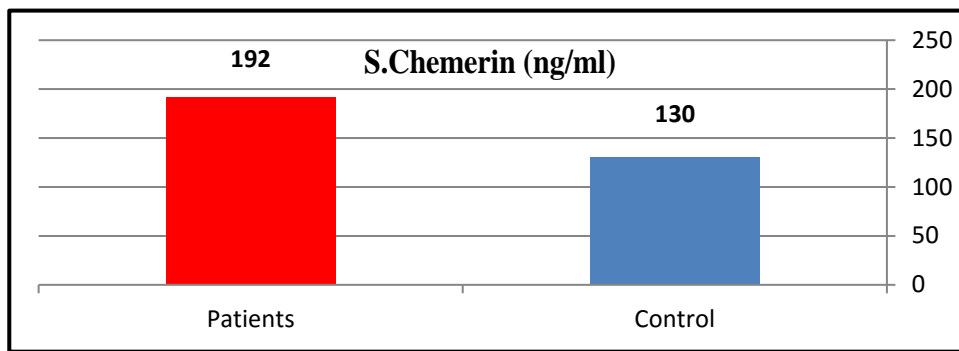


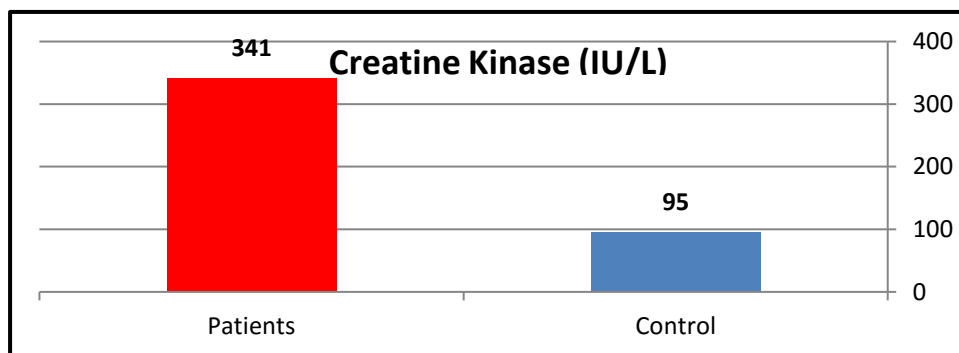
**Figure 1.** Myocardial infarction resulting from coronary artery obstruction.



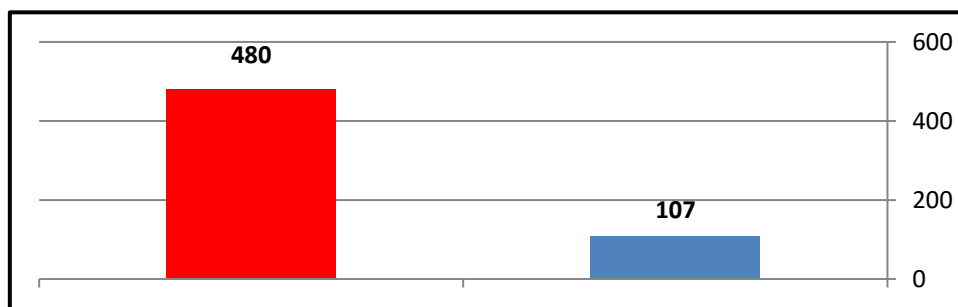
**Figure 2.** Different Chemerin roles in the body, including its effect on blood vessels [7].



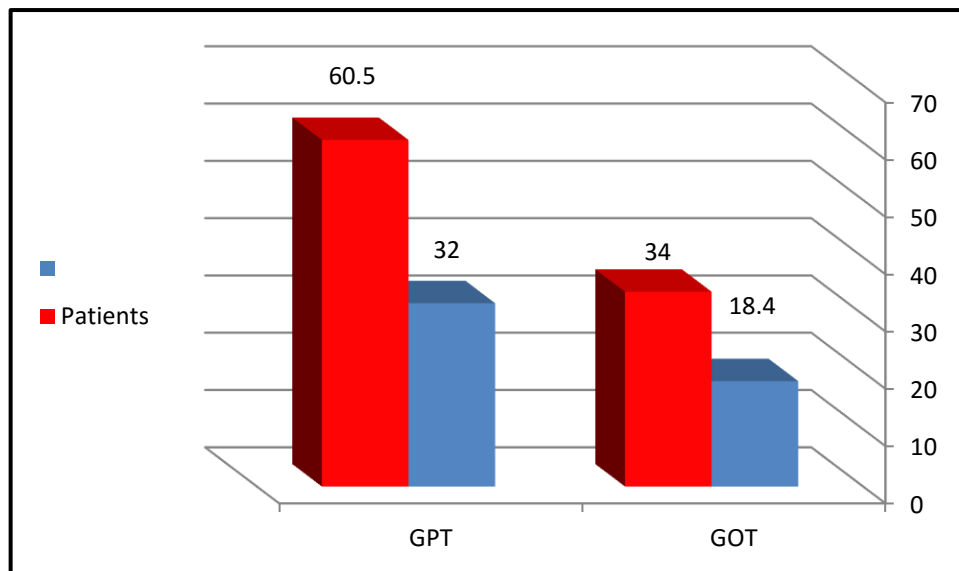
**Figure 3.** Chemerin levels in the myocardial infarction group compared to the control group.



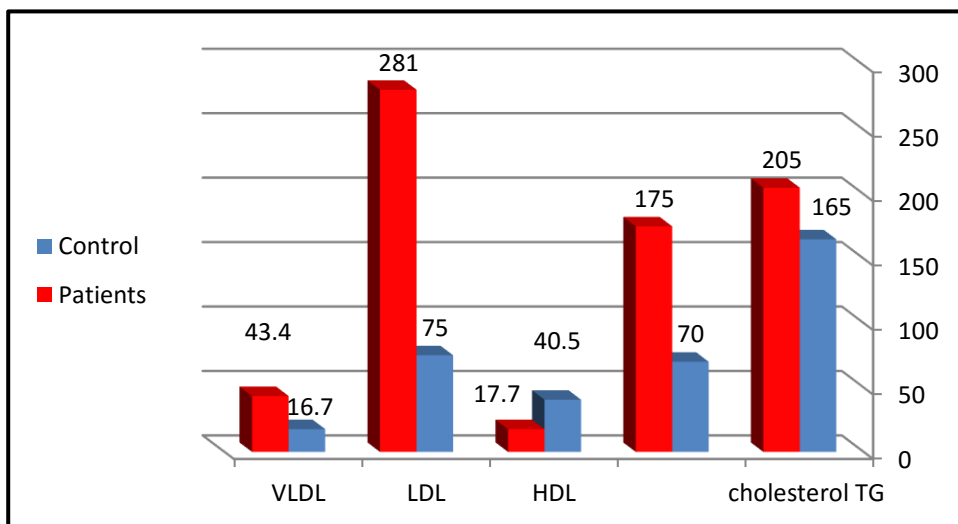
**Figure 4.** Levels of the enzyme Creatine Kinase CK in the group of patients with myocardial infarction compared to the group of healthy individuals



**Figure 5.** Levels of lactate dehydrogenase enzyme in the group of patients with myocardial infarction compared to the control group.



**Figure 6.** Levels of liver enzymes GOT and GPT in the group of patients with myocardial infarction compared to the control group



**Figure 7.** Lipid profile levels in the myocardial infarction group compared to the control group.